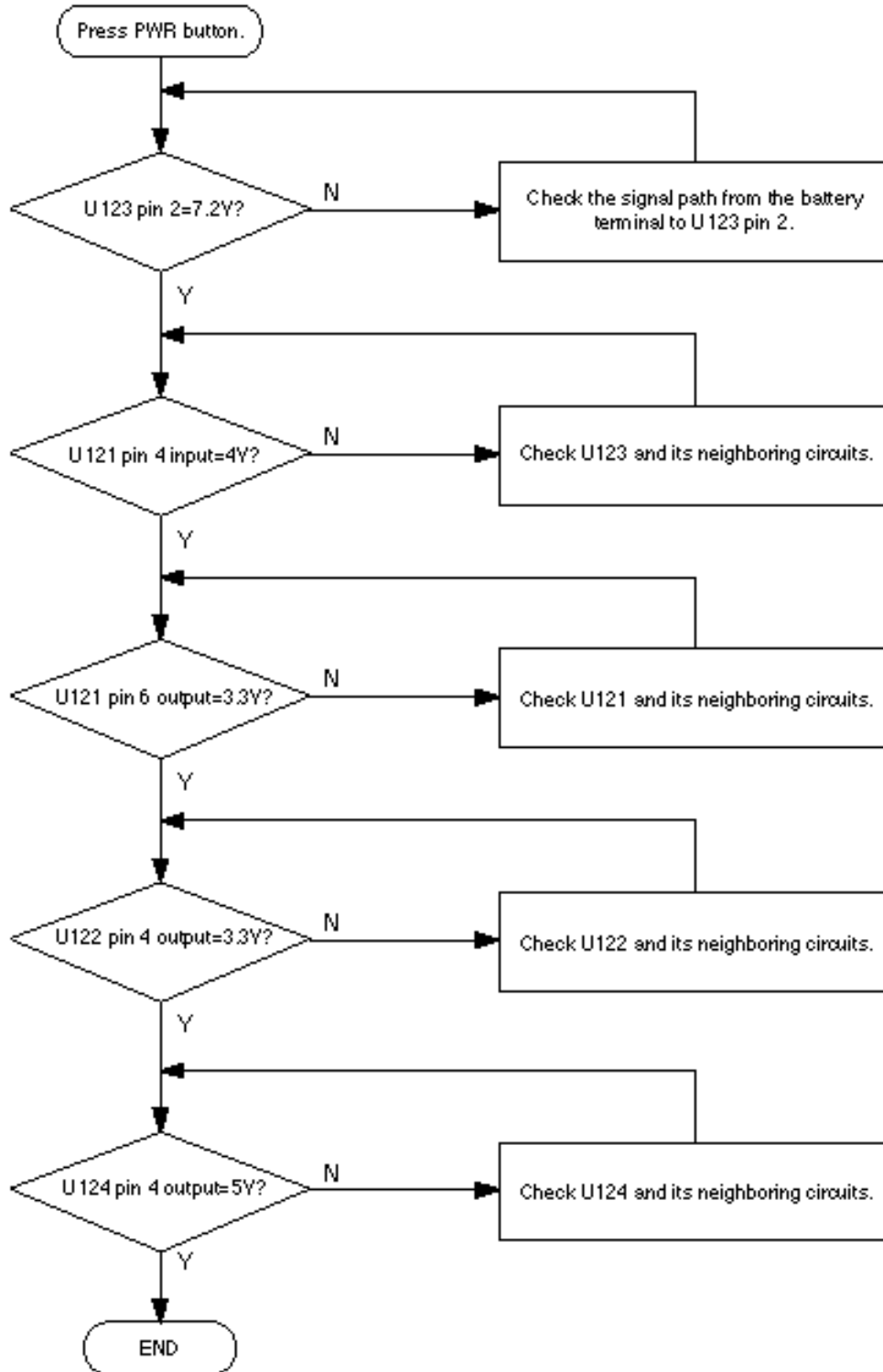


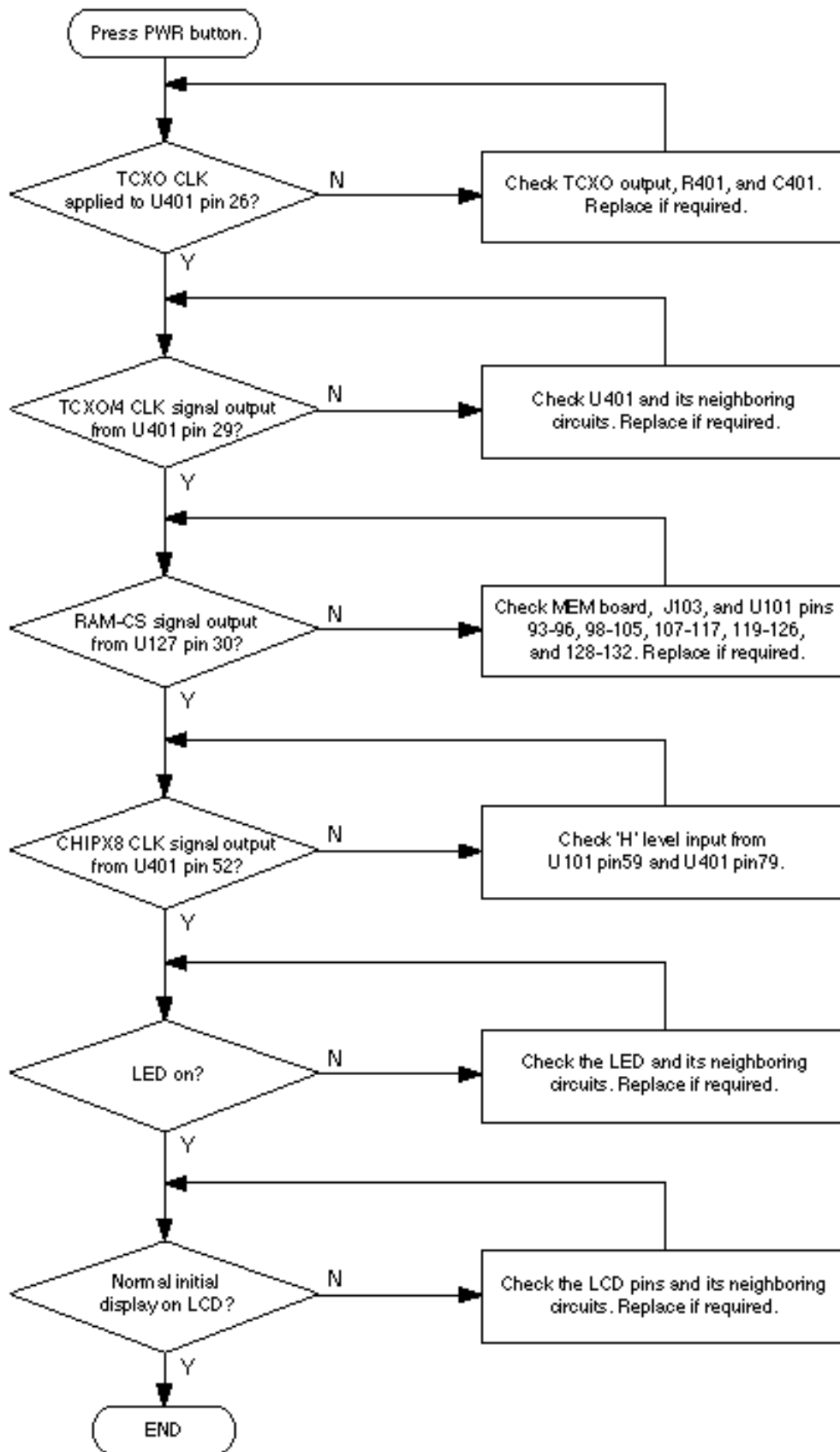
7. Troubleshooting

7-1 Logic Section

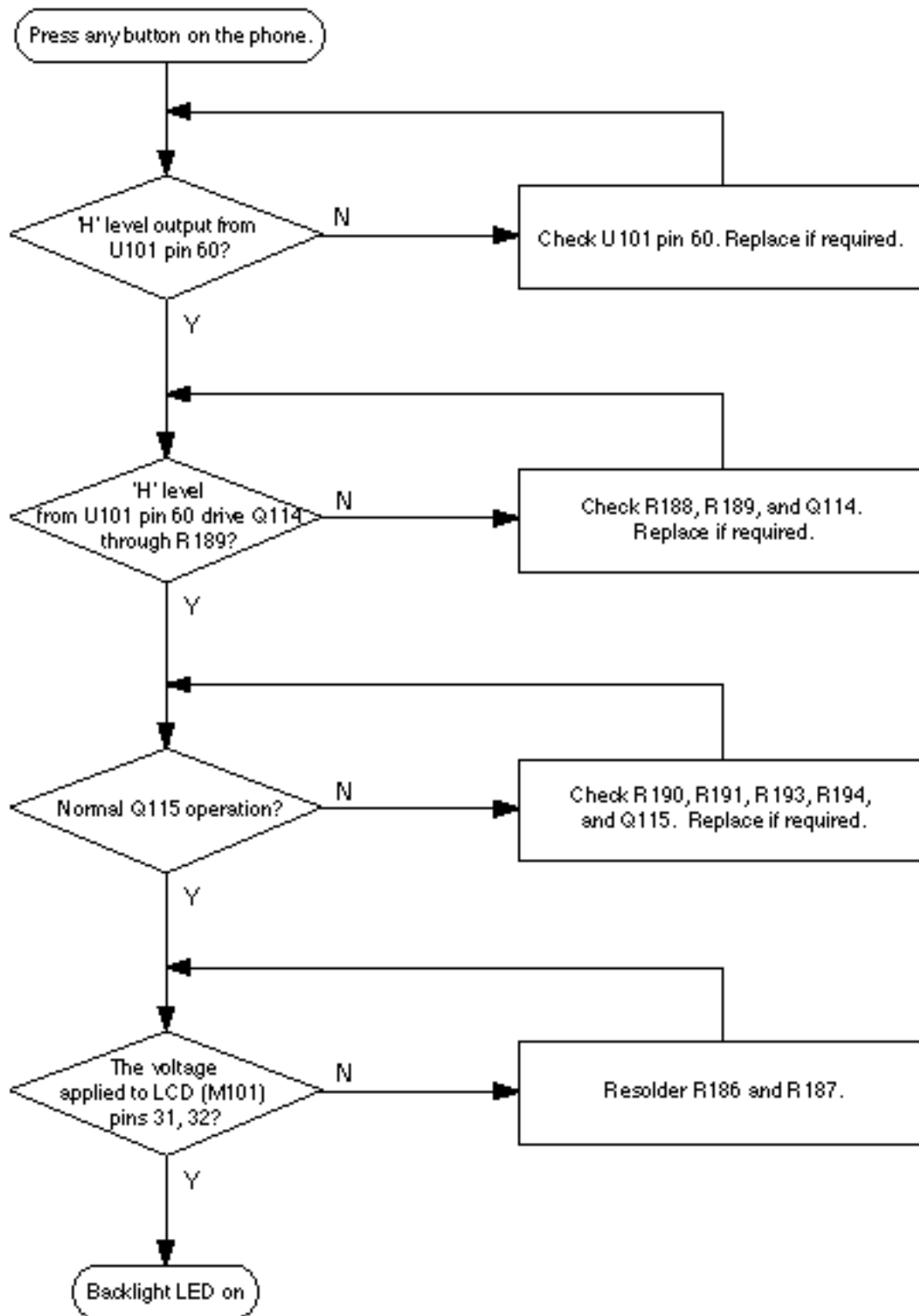
7-1-1 No Power



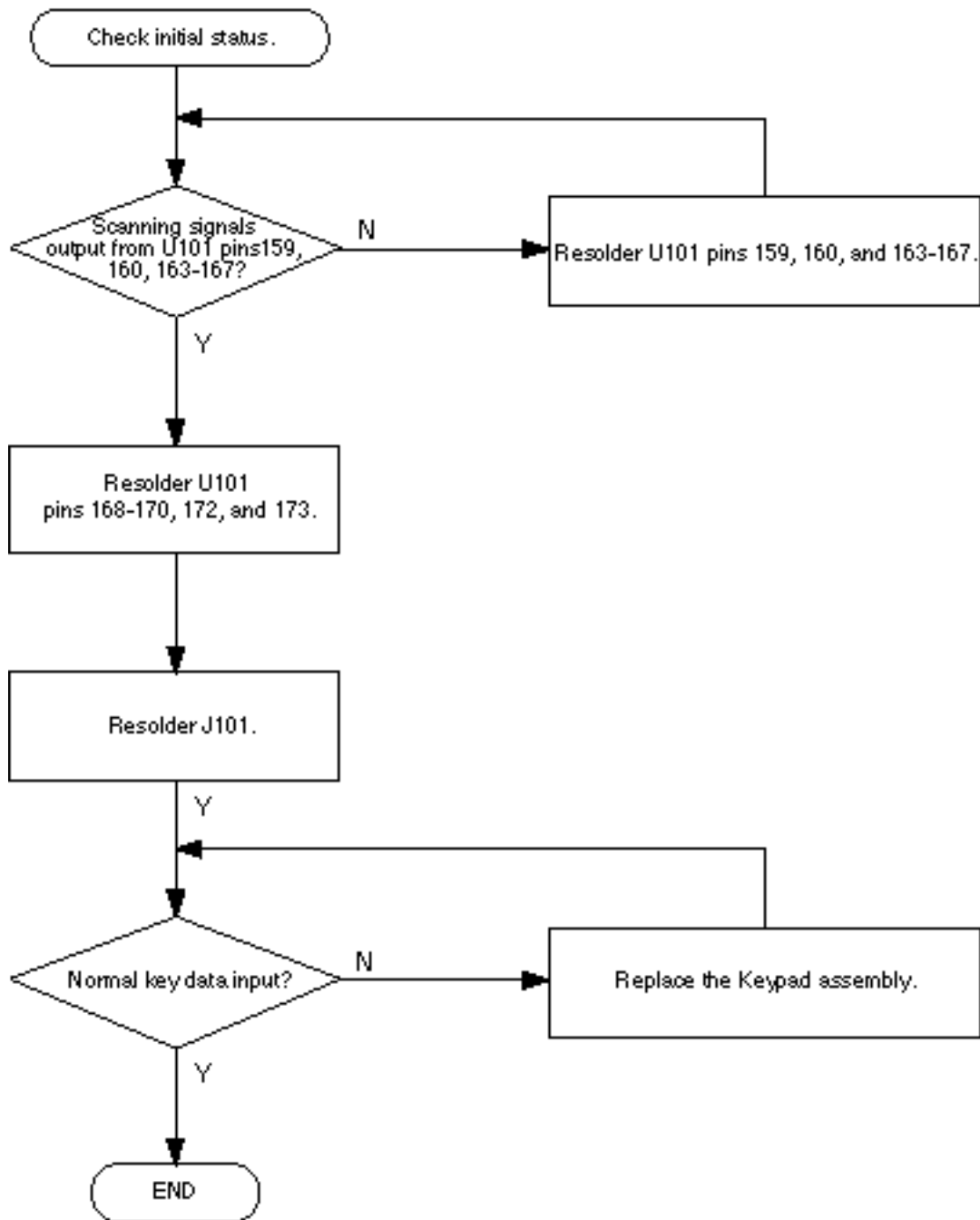
7-1-2 Abnormal Initial Operation (Normal +3.3V voltage source)



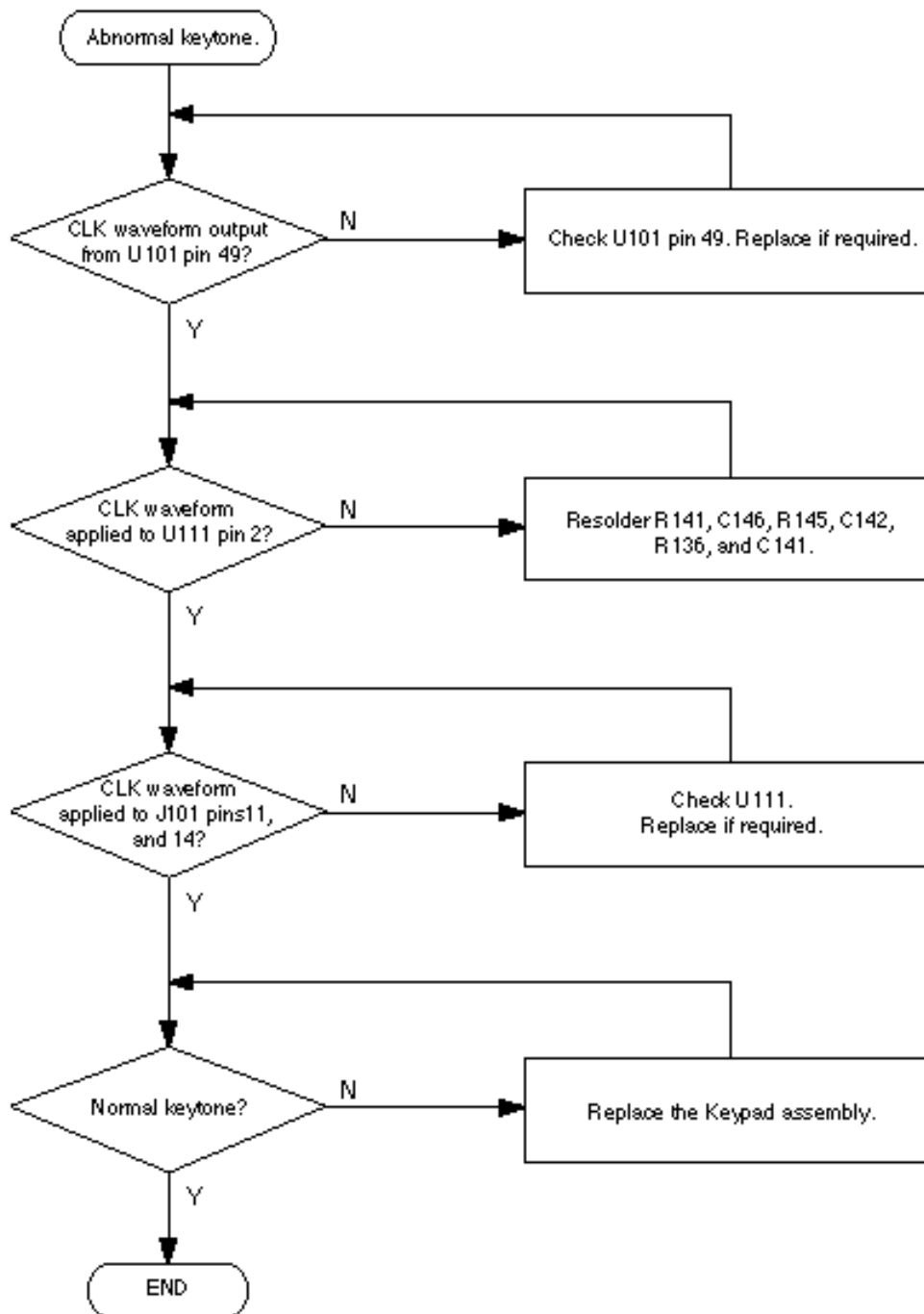
7-1-3 Abnormal Backlight Operation



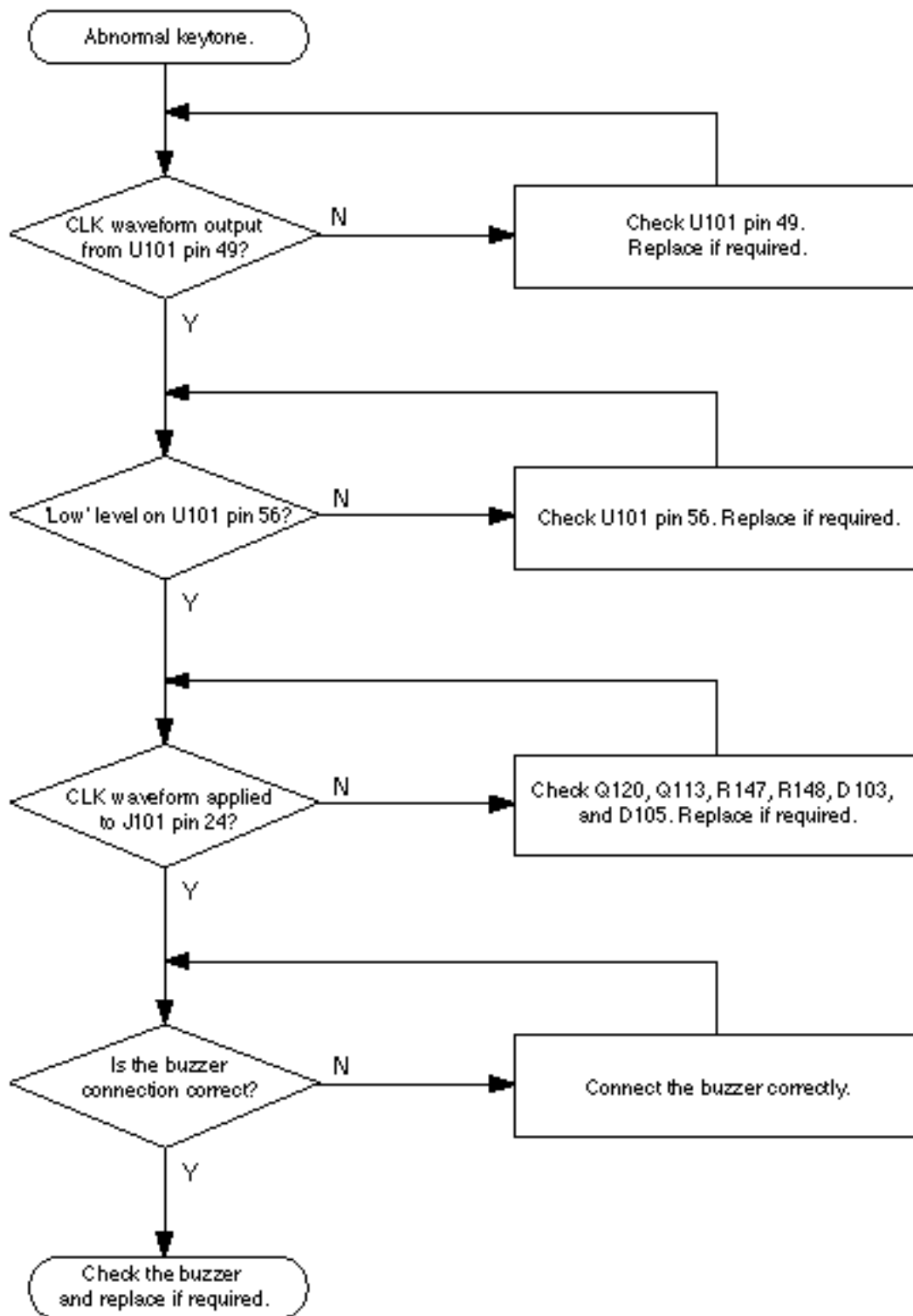
7-1-4 Abnormal Key Data Input



7-1-5 Abnormal Keytone

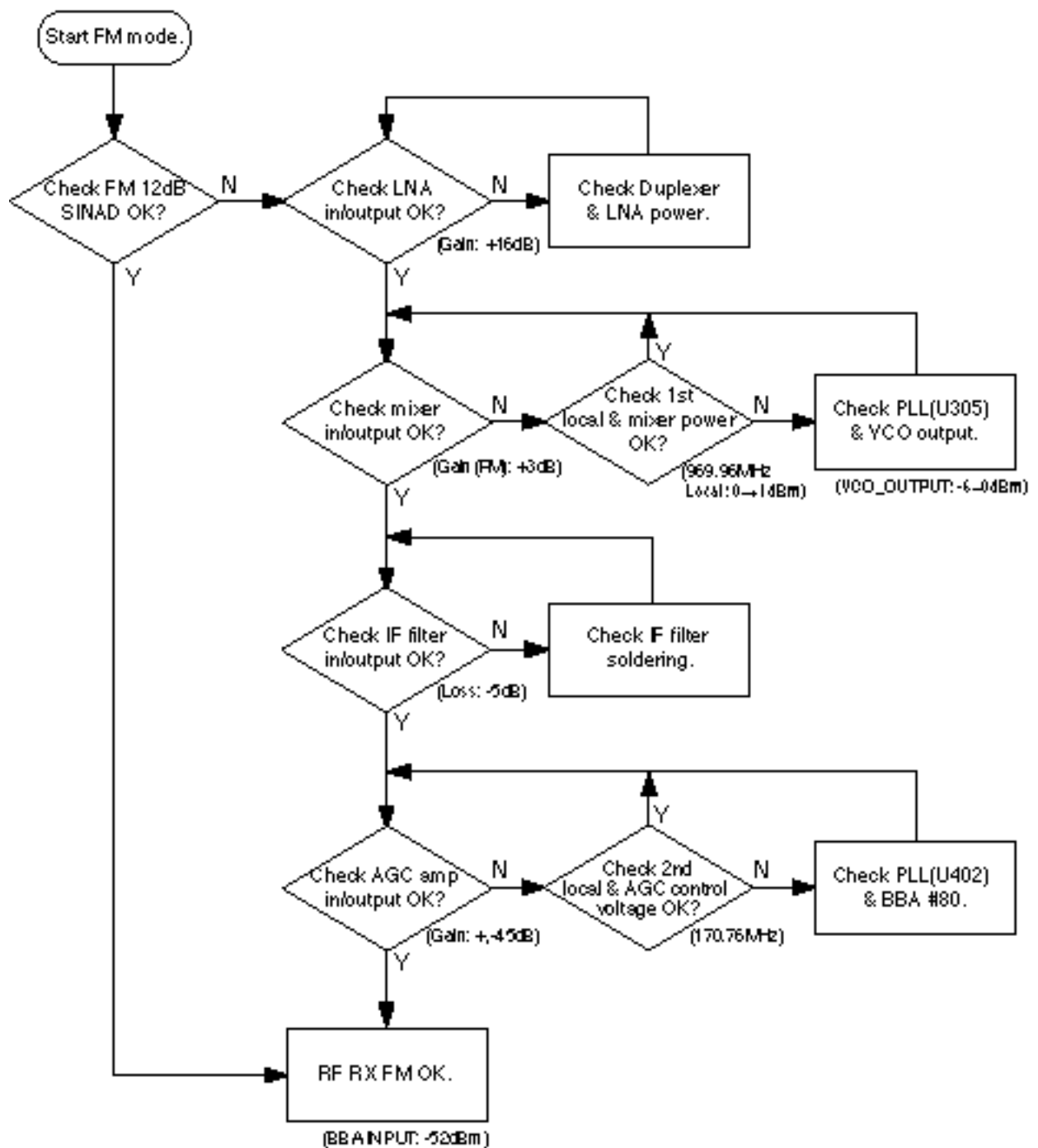


7-1-6 Abnormal Alert Tone

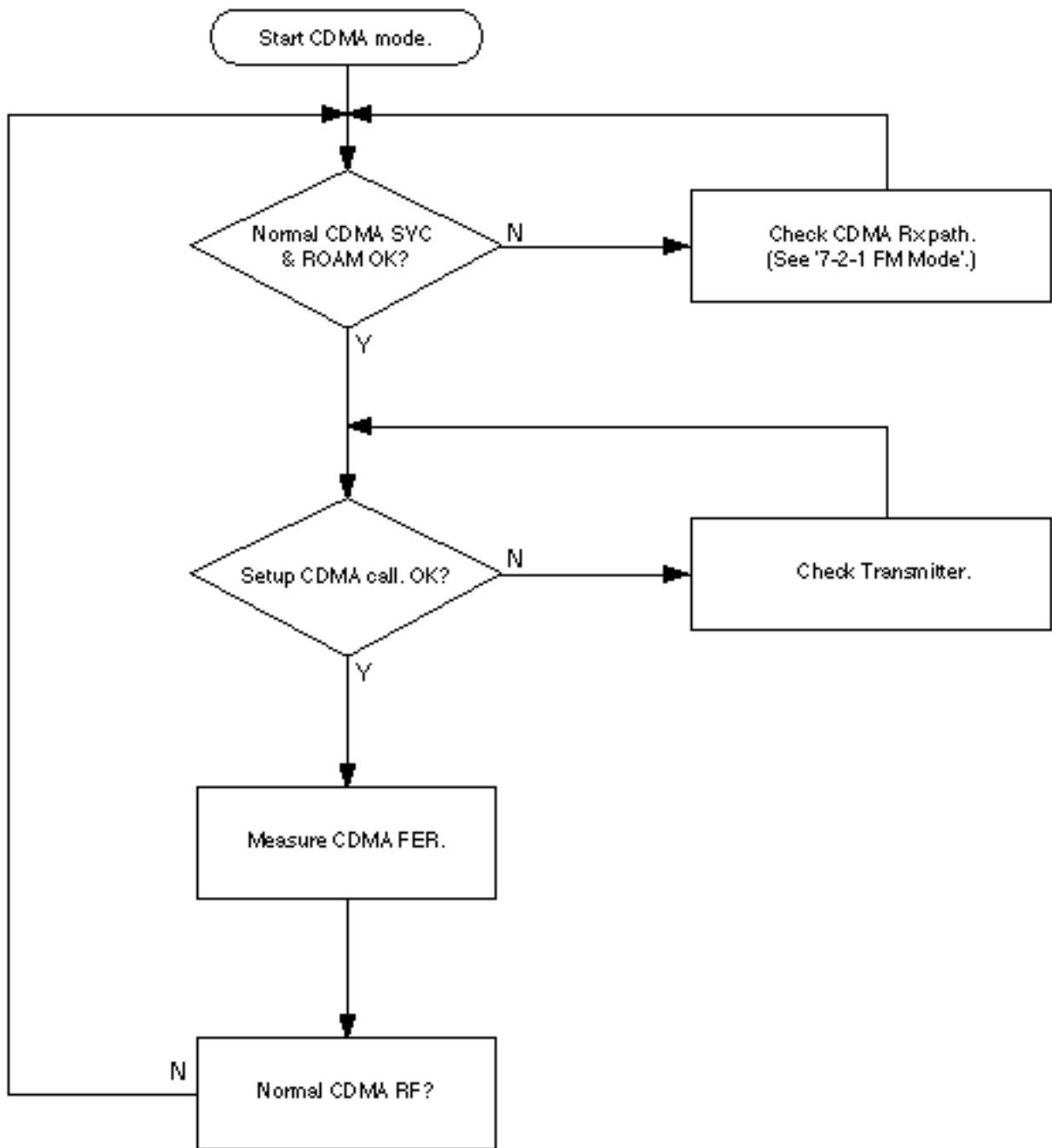


7-2 Receiver Section

7-2-1 FM Mode

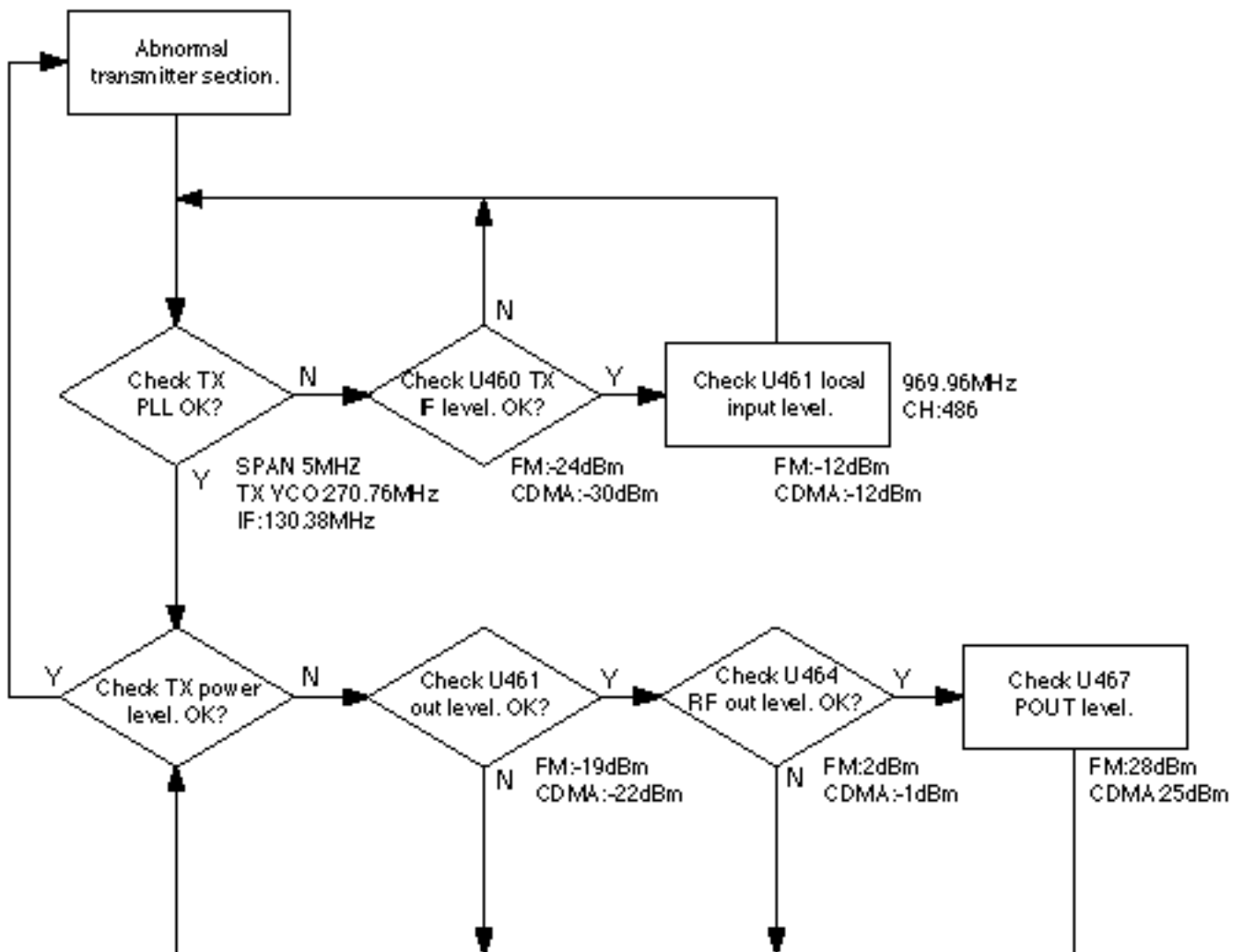


7-2-2 CDMA Mode



7-3 Transmitter Section

7-3-1 Troubleshooting Flow



MEMO